

TCC-3242E

680TVL/D-WDR CCTV CAMERA



- FEATURES -

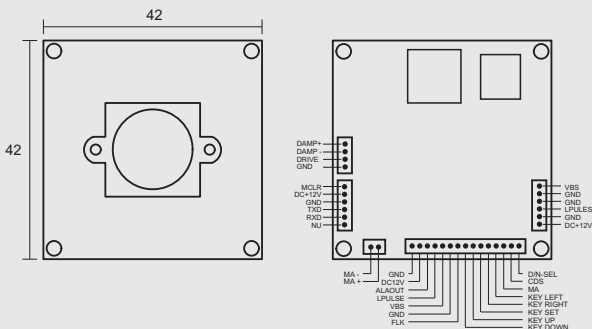
- 1/3" SONY 960H Ex-view HAD II CCD (Effio-E)
- 680TV Lines Horizontal Resolution (B/W: 730TV Lines)
- Excellent Low Light Sensitivity of 0.08Lux/F1.2
- Day & Night (Output the Filter changing signal)
- Digital WDR : Digital Wide Dynamic Range
- DNR :Digital Noise Reduction
- HLC : Highlight Suppress BLC
- High sensitivity and high saturation signal
- Privacy Zone, Motion Detection
- Preset OSD menu (8 languages)

Option

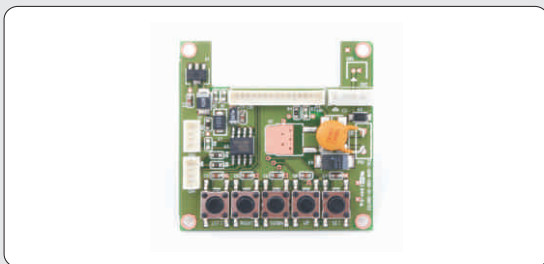
- OSD Control Board



- DIMENSION -



- OSD CONTROL BOARD -



- VARIFOCAL LENS TYPE -



- SPECIFICATIONS -

TCC-3242E		
Signal Format	NTSC	PAL
Horizontal Resolution	Color : 680TV Lines, B/W : 730TV Lines	
Image Sensor	1/3" SONY 960H Ex-view HAD II CCD (Effio-E)	
Total Pixels	1020(H) x 508(V)	1020(H) x 596(V)
Effective Pixels	976(H) x 494(V)	976(H) x 582(V)
Scanning System	2:1 Interlace	
Synchronization	Internal	
Scanning Frequency	15.734 KHz(H), 59.94 Hz(V)	15.625 KHz(H), 50.00 Hz(V)
Video Output	CVBS : 1.0Vp-p/75Ω	
Min. Illumination	Color : 0.1 Lux(50IRE) / 0.02Lux(15IRE) @ F1.2 B/W : 0.08Lux(50IRE) / 0.002Lux(15IRE) @ F1.2	
Electronic Shutter	1/60 ~ 1/100,000 sec	1/50 ~ 1/100,000 sec
Iris Control	DC / MANUAL	
Signal to Noise Ratio	52dB	
Backlight Compensation	BLC / HLC / OFF	
White Balance	ATW/PUSH/USER1/USER2/ANTI CR/MANUAL/PUSH LOCK	
Gain Control	Level Setting	
DNR	ON / OFF	
Day & Night	AUTO / COLOR / BW	
Digital WDR	ON / OFF	
Gamma	0.45	
Motion Detection	ON / OFF	
Privacy	ON / OFF (8 Zone)	
Alarm Output	1ea	
Etc. Function	Image mirror, Adjust brightness, Adjust contrast, Adjust sharpness, Adjust HUE, Adjust GAIN	
Camera ID	ON / OFF	
OSD	Built-in (ENG, JPN, GER, FRN, RUS, POR, SPN, CHN)	
Input Voltage /	DC 12V (±10%)	
Power Consumption	Max. 2.0W	
Operating Temp/Hum	Temperature : -10°C to +50°C / Humidity : 30% to 80% RH	
Storage Temp/Hum	Temperature : -20°C to +60°C / Humidity : 20% to 90% RH	
Dimension	42.0(W) x 42.0(H) x 1.0(T)mm	
Weight	Approx. 12g	
Option	OSD Control Board	