

MDCR-144F

4CH CAR H.264 DVR(GPS/G-SENSOR)



- FEATURES -

- 4CH Video & Audio input / 4CH Camera power output
- 1CH Video & Audio(Mono) Output (A/V Out)
- Save Video with GPS & G-Sensor data to CF card
- 4ch Sensor input / 1ch Alarm output
- Embedded Linux H.264 Compression
- Live Display frame rate : 120fps(NTSC) / 100fps(PAL)
- Recording frame rate
 - D1 : 720x480 (60fps) / 720x576 (50fps)
 - Half D1 : 720x240 (120fps) / 720x288 (100fps)
 - CIF : 360x240 (120fps) / 352x288 (100fps)
- Many kind of Event / Alarm catching system
- Pre / Post recording by Alarm
 - Pre recording : 1 ~ 30sec
 - Post recording : 2 ~ 300sec
- Special viewer has full functions and tracking on Google earth map.
- External CF Memory card : Over 2 Giga byte, up to 64 Giga byte
- 9V to 35V free power input
- Special hard case protection
- Door Key Lock System
- Full function of Own Viewer Software on the PC
- Additional Video out port on Front Panel

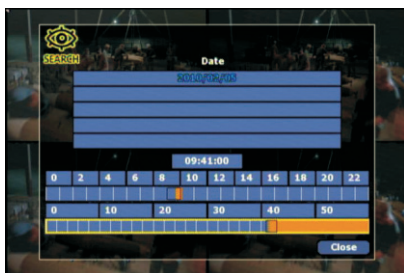
- CONFIGURATION -



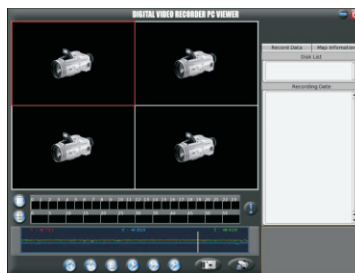
Live Monitoring



OSD Setting Menu



Search Mode



Digital Video Recorder PC Viewer

- BACK VIEW -



- SPECIFICATIONS -

MDCR-144F				
VIDEO	Input channel	4 CH (Customized connection)		
	Signal Selection	Auto Detection (NTSC / PAL)		
	Input type	Composite (Customized Connector)		
	Video loss check	Support		
	Display output	1CH A/V OUT (Stereo Jack Connector)		
	Output type	Composite 1.0Vp-p, 75Ω		
AUDIO	Input channel	4CH (Customized Connector)		
	Codec	ADPCM		
ALARM	Output	1CH (A/V OUT : Stereo Jack Connector)		
	Sensor input	Up to 4CH (Terminal)		
LIVE	Alarm Output	1CH (NC/NO)		
	Frame Rate	NTSC : 120fps (30fps/ch)	PAL : 100fps(25fps/ch)	
RECORDING	Channel Disable	Support		
	Video Loss Detection	Support		
	Screen Split	1, 4		
	Rear View Auto Popup	Depend on SW (Optional)		
	Compression	H.264		
	Source File Format	Own file format / AVI file format (Optional)		
	Resolution & Recording Speed	360x240 / 352x288	NTSC : Max 120fps(30fps/ch)	PAL : 100fps(25fps/ch)
		720x240 / 720x288	NTSC : Max 120fps(30fps/ch)	PAL : 100fps(25fps/ch)
		720x480 / 720x576	NTSC : Max 60fps(15fps/ch)	PAL : 50fps(12fps/ch)
	Adjust Frame Rate per channel	Support		
Frame rate concentration	Event Driven (Optional)			
Average Data Size	360x240 / 352x288	4K byte / pic (High Quality)		
	720x240 / 720x288	5K byte / pic (High Quality)		
	720x480 / 720x576	6K byte / pic (High Quality)		
Image Quality Level	VBR	3 Levels, 5 Levels (Optional)		
	CBR	3 Levels, 5 Levels (Optional)		
Recording Mode	Continuous / Motion, Sensor or both			
Motion Detection Sensitivity	Support			
Pre Recording by Alarm	1~30 sec (Optional)			
STORAGE	Post Recording by Alarm	2~300sec (Optional)		
	CF Full Warning (Overwrite)	Beep & OSD Indication Alert		
SEARCH & PLAYBACK	Daylight saving time	Support		
	External CF Memory Card	Interface Type	CF Memory Card / SSD Card	
		Capacity of 1 CF	Over 2 Giga Byte	
	Play back (Viewer S/W)	Control	One step Forward / Reverse, Play, Fast Forward / Reverse	
		Speed	x2, x4, x8	
	Realtime Playback	Support		
Search Mode	Time & Date, Event			
Network (Customizing project)	Max Accessible Clients	3		
	Network Type	Wireless ethernet		
	Network Interface	802.11 B/G/N, RJ45		
USER I/F	Video Stream with OSG	Own viewer S/W		
ADDITIONAL FUNCTION	Multi-Language	Support (Viewer S/W Only : Optional)		
	GPS	1 Serial port for External GPS optional device requirement (Optional)		
	G-Sensor	Movement catched		
	External IR Receiver for Remote Controller	1 Port optional cable required		
SYSTEM	Control & Debugging	Rs232 / Media		
	Operation System	Embedded Linux (Ver. 2.6.xx)		
	Dimension (WxHxD mm)	172 x 174 x 40mm		
	Net Weight	1KG (2KG with package)		
	Power Out	12V DC to camera (4 channel)		
	Power Source	9 ~ 35V / 1A		

* The above specifications can be changed without any prior notification.



- RECORDING TIME -

Each Channel Data Storage (Low Quality)			
	7.5(6)fps	15(12)fps	30(25)fps
360x240 / 360x288	65MB/Hour	131MB/Hour	263MB/Hour
720x240 / 720x288	95MB/Hour	197MB/Hour	395MB/Hour
720x480 / 720x576	131MB/Hour	263MB/Hour	527MB/Hour

* The above specifications can be changed without any prior notification.

Each Channel Data Storage (Middle Quality)			
	7.5(6)fps	15(12)fps	30(25)fps
360x240 / 360x288	81MB/Hour	162MB/Hour	325MB/Hour
720x240 / 720x288	115MB/Hour	230MB/Hour	460MB/Hour
720x480 / 720x576	162MB/Hour	325MB/Hour	650MB/Hour

* The above specifications can be changed without any prior notification.

Each Channel Data Storage (High Quality)			
	7.5(6)fps	15(12)fps	30(25)fps
360x240 / 360x288	100MB/Hour	200MB/Hour	400MB/Hour
720x240 / 720x288	135MB/Hour	270MB/Hour	540MB/Hour
720x480 / 720x576	185MB/Hour	370MB/Hour	740MB/Hour

* The above specifications can be changed without any prior notification.